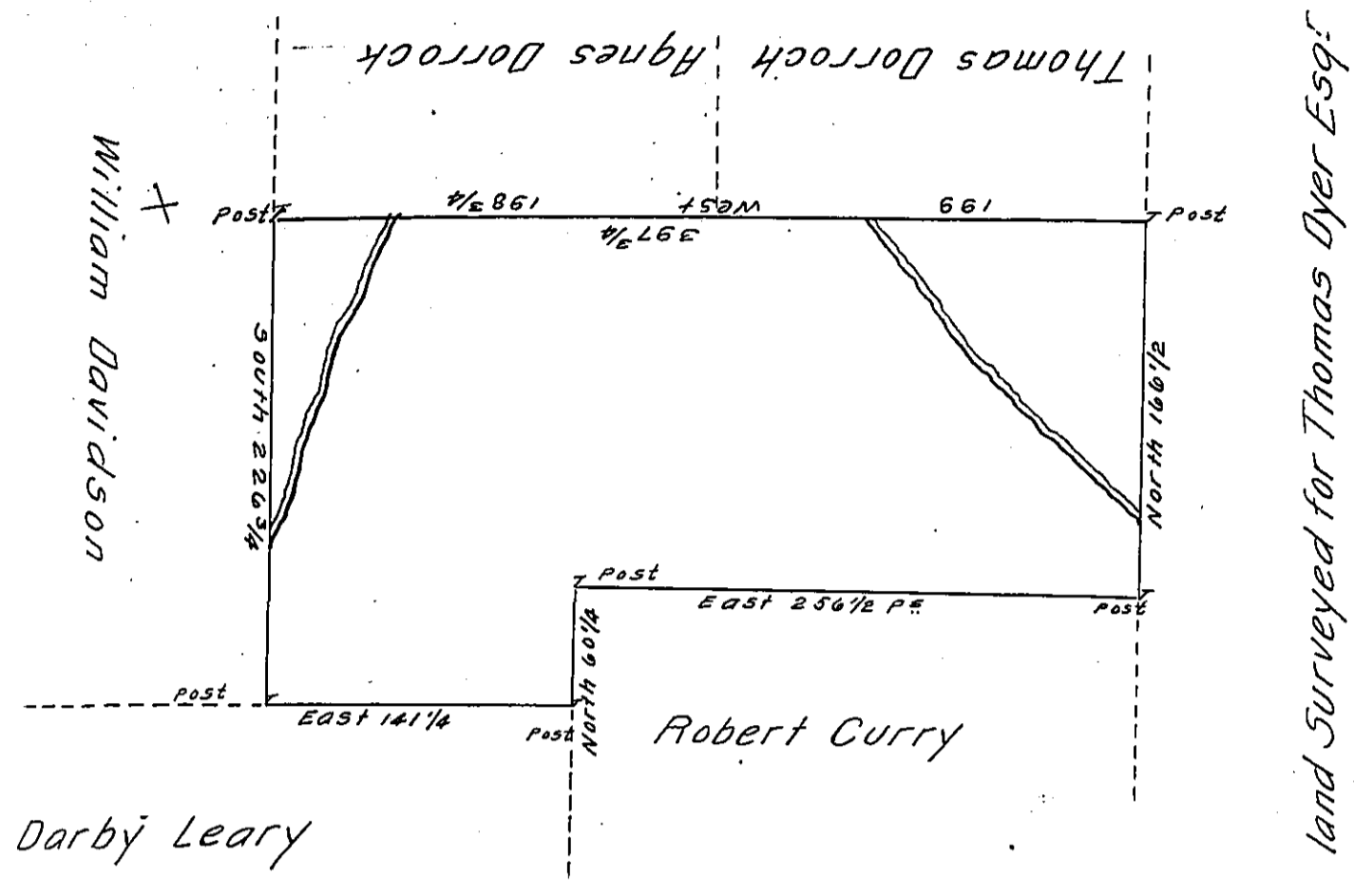


FORM No. 1.



Darby Leary

256 1/2  
141 1/4  
397 3/4

By Virtue of a Warrant dated the 11<sup>th</sup> September 1784. Surveyed the 30<sup>th</sup> October 1784. to Mary Curry the above described tract of land situate on the West side of Lehi - in Northampton County. Containing four hundred and forty Acres. one hundred and five perches and the Allowance of Six # Cent &c<sup>a</sup>

John Lukens Esquire }  
Surveyor General }      # Geo. Palmer -

IN TESTIMONY that the above is a copy of the original remaining on file in the Department of Internal Affairs of Pennsylvania, made conformably to an Act of Assembly approved the 16th day of February, 1833, I have hereunto set my Hand and caused the Seal of said Department to be affixed at Harrisburg, this tenth day of January 1911.

*Henny Howard*  
Secretary of Internal Affairs.